

## 0.39"(10.00mm)Dual Digit 7 Segment Display

### Features:

- \*Ultra segment intensity
- \*Wide viewing angle
- \*Range of colors
- \*Black face White segment
- \*RoHS compliant

### Available option:

- \*Alternative face and segment color
- \*Alternative font
- \*Cropped terminal pins
- \*Available emitting color
- \*Low current version

### Electro/Optical Characteristics If=20mA Ta=25°C

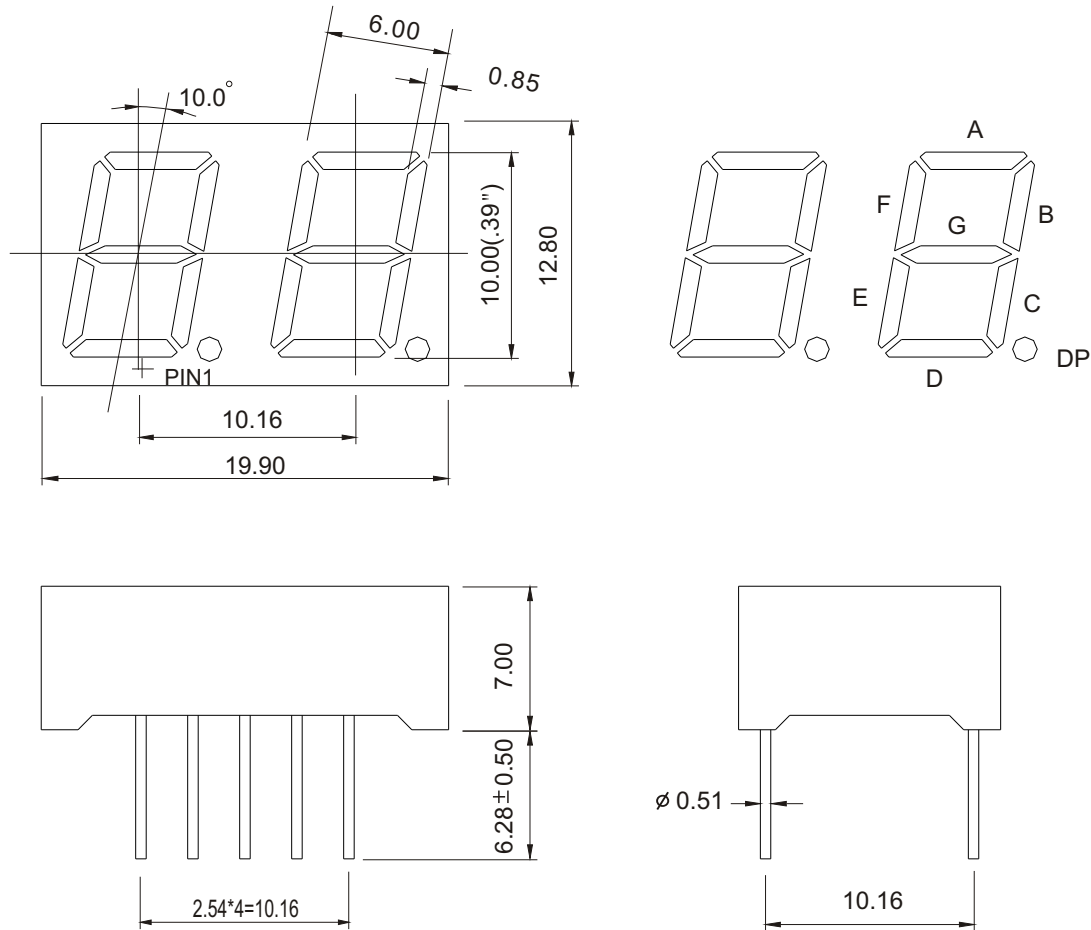
| Part Number<br>Common Cathode | Part Number<br>Common Anode | Emitting Color            | Peak<br>Wavelength | Forward Voltage V <sub>F</sub> /Seg. |      | Luminous Intensity I <sub>v</sub> /seg. |       |
|-------------------------------|-----------------------------|---------------------------|--------------------|--------------------------------------|------|---|-------|
|                               |                             |                           |                    | Typ.                                 | Max. | Min.                                    | Typ.  |
| LD-D039UR-CC                  | LD-D039UR-C                 | GaAlAs/GaAs DDH Ultra Red | 660                | 1.90                                 | 2.50 | 30.00                                   | 50.00 |
| LD-D039UO-CC                  | LD-D039UO-C                 | AlGaInP/GaAs Ultra Orange | 632                | 2.00                                 | 2.50 | 40.00                                   | 60.00 |
| LD-D039UA-CC                  | LD-D039UA-C                 | AlGaInP/GaAs Ultra Amber  | 605                | 2.00                                 | 2.50 | 40.00                                   | 60.00 |
| LD-D039UY-CC                  | LD-D039UY-C                 | AlGaInP/GaAs Ultra Yellow | 590                | 2.00                                 | 2.50 | 40.00                                   | 60.00 |
| LD-D039UG-CC                  | LD-D039UG-C                 | AlGaInP/GaAs Ultra Green  | 574                | 2.10                                 | 2.50 | 25.00                                   | 40.00 |
| LD-D039UPG-CC                 | LD-D039UPG-C                | InGaN/SiC Pure Green      | 525                | 3.50                                 | 4.00 | 50.00                                   | 80.00 |
| LD-D039UB-CC                  | LD-D039UB-C                 | InGaN/SiC Ultra Blue      | 470                | 3.50                                 | 4.00 | 40.00                                   | 60.00 |
| LD-D039UW-CC                  | LD-D039UW-C                 | InGaN/SiC Ultra White     | X-0.31/Y-0.31      | 3.50                                 | 4.00 | 40.00                                   | 60.00 |
| Units                         |                             |                           | nm                 | V                                    |      | mcd                                     |       |

### Maximum Ratings Ta=25°C (Derate above 25°C)

| Characteristic                 | Test Condition                     | Symbol           | UR         | UE    | YO    | UY    | UG    | PG     | UB     | UW     | Units |
|--------------------------------|------------------------------------|------------------|------------|-------|-------|-------|-------|--------|--------|--------|-------|
| Pulse Forward Current Per Seg. | 1/10 duty cycle 0.1ms Pulse width  | I <sub>FP</sub>  | 100        | 100   | 100   | 100   | 100   | 100    | 100    | 100    | mA    |
| DC Forward Current Per Seg.    |                                    | I <sub>F</sub>   | 25         | 30    | 30    | 30    | 30    | 30     | 30     | 30     | mA    |
| Reverse Current Per Seg.       | V <sub>R</sub> =5V                 | I <sub>R</sub>   | 10         | 10    | 10    | 10    | 10    | 10     | 10     | 10     | μA    |
| Power Dissipation              |                                    | P <sub>D</sub>   | 60*16      | 65*16 | 65*16 | 65*16 | 75*16 | 110*16 | 120*16 | 120*16 | mW    |
| Operating Temperature          |                                    | T <sub>OPR</sub> | -40 to +80 |       |       |       |       |        |        |        | °C    |
| Storage Temperature            |                                    | T <sub>TSG</sub> | -40 to +85 |       |       |       |       |        |        |        | °C    |
| Lead soldering temperature     | 1.60mm from body maximum 3 seconds |                  | 260        |       |       |       |       |        |        |        | °C    |

# 0.39"(10.00mm)Dual Digit 7 Segment Display

## PACKAGE DIMENSION

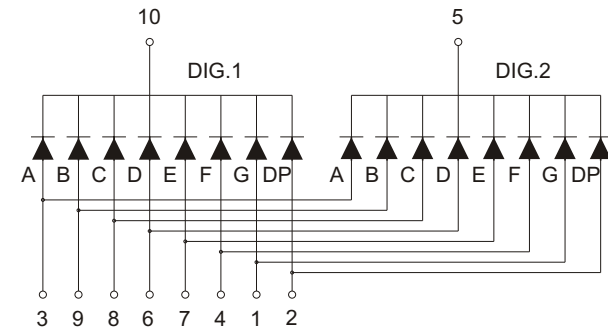


Tolerance  $\pm 0.25\text{mm}$  unless stated

## INTERNAL CIRCUIT DIAGRAM

### Common Cathode

LD-D039XX-CC



### Common Anode

LD-D039XX-C

